



## Laurel Mews, Brixton, SE5

2 bedroom flat - purpose built for sale

**£525,000**

Leasehold

### Property Details

A stylish and contemporary two double bedroom apartment with a private South-West facing terrace, positioned on the second floor of the thoughtfully designed eco-development, Laurel Mews. Built in 2011 with sustainability in mind, this energy-efficient home features solar panels, high-grade insulation, zoned underfloor heating, an air source heat pump, and rain-sensitive Velux windows, resulting in low running costs and minimal environmental impact. A bright entrance hall with engineered oak flooring and a generous skylight sets the tone, flowing into an expansive open-plan reception room. Dual windows, skylights and recessed lighting enhance the natural light and sense of space, while the coral feature wall and modern wooden floors add warmth and character. The sleek, recently installed kitchen is both stylish and functional, with integrated appliances and clever storage, leading onto the decked, sunny terrace—ideal for al fresco dining. Two skylit double bedrooms offer peaceful retreats, with the principal bedroom boasting fitted wardrobes. The modern bathroom completes the interior. A sociable, eco-conscious community enhances this appealing home, complete with bike storage.

### Features

- Two double bedrooms
- South-West facing private terrace
- Sustainable eco-development
- Friendly mews setting
- Bright and stylish
- Beautifully presented
- Covered bike storage
- Central Brixton and Camberwell both a fifteen-minute stroll
- Loughborough Junction station a three-minute walk
- Ruskin Park a five-minute amble

Council tax band C

EPC rating C (78)





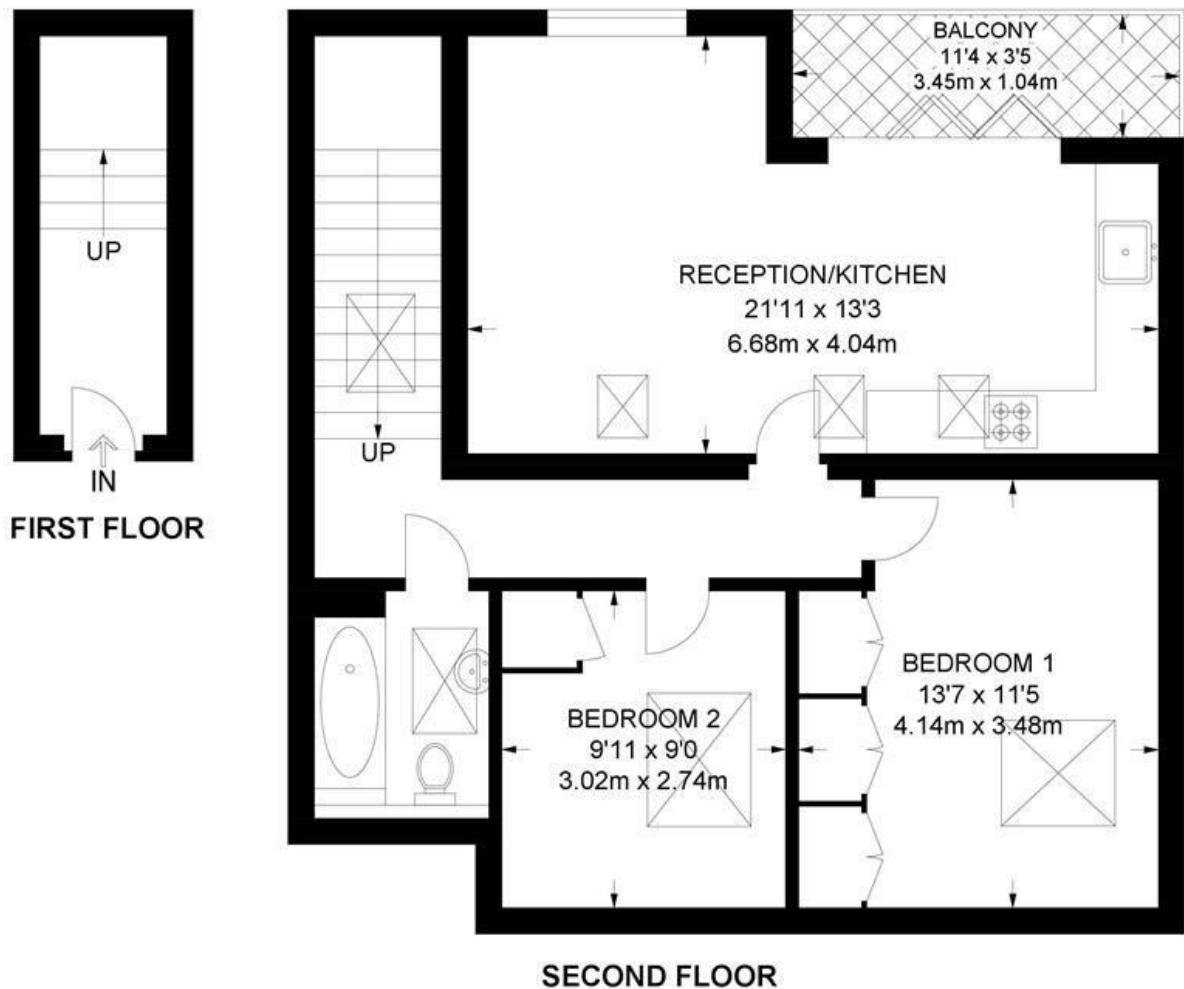




Laurel Mews, Brixton, SE5

## Laurel Mews, SE5 2 Bedroom Flat

APPROXIMATE GROSS INTERNAL AREA: 749 SQ FT / 69.6 SQ M



While we try our very best, floor plans are produced as a guide only and we take no responsibility for the precise accuracy with which any property is represented.

Laurel Mews, Brixton, SE5

